

Who We Are

Town of Middleton

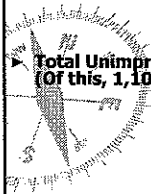
Prepared for:
*the Comprehensive Plan Committee and
 Public Education Forums*



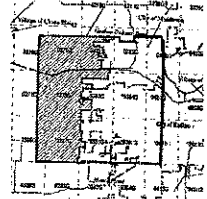
A Township = 36,000 Acres

▶ Town of Middleton is now approximately 10,514 acres

▶ Less than 1/2 a Township remaining



Total Unimproved Acreage = 2,635
 (Of this, 1,100 is Business Agriculture)



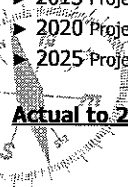
Population History

- ▶ 1970 2,028
- ▶ 1980 2,667
- ▶ 1990 3,628
- ▶ 2000 4,594
- ▶ 2005 5,350
- ▶ 2006 5,557

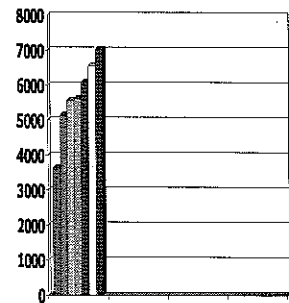


Population Projection (DOA)

- ▶ 2000 Census 3,628
- ▶ 2005 Actual 5,129
- ▶ 2006 Actual 5,557
- ▶ 2010 Projection 5,608
- ▶ 2015 Projection 6,057
- ▶ 2020 Projection 6,526
- ▶ 2025 Projection 7,027



Actual to 2025 = +26%



Park Inventory- Town

- ▶ **Town Park Acres 207**
- ▶ **Ice Age Park 85 Acres**
- ▶ **Dane County 320 Acres**

(These figures do not contain trail or outlot open space areas)



Town Roads

- ▶ The Town contains **63** miles of roads.

In 2007 **15** miles of roads will be chip-sealed.

Town Road right-of-way includes 33 feet from the center line on both sides of the road. This area must be kept clear of any obstructions for plowing, maintenance, utility construction, etc.

2000 Census Demographics



- ▶ **84%** of Households Family Occupied
- ▶ **16%** are Non-Family Households (182 are one-person households)
- ▶ **98%** of White Race
- ▶ **Median Home Value \$246,700** (highest of all Towns in Dane County, Town of XP is next highest with \$197,400)

Demographics *Continued*

- ▶ Unemployment rate is under 2%
- ▶ Housing stock – Less than 25% built before 1970
- ▶ 75-85 % of commuters ride alone
- ▶ 15% of the 2000 population had a disability
- ▶ 2700 employed persons (1450 male & 1250 female), 54% in professional positions

Town of Middleton
2006 Total Assessed Value

- ▶ Land & Improvements \$955,962,623
- ▶ Personal Property \$ 6,431,740
- Total \$962,394,363**



▶ That is almost a **BILLION** dollars!



2006 Average Assessed Value

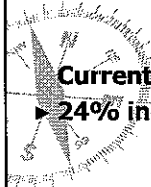
The average assessed value for
residential parcels in the
Town of Middleton



\$392,800

Household Projections

- ▶ **Currently** 2,010
- ▶ **2015** 2,145
- ▶ **2020** 2,323
- ▶ **2025** 2,500



Current to 2025 =
▶ **24% increase**

Income

- ▶ **Per Capita Income \$46,214**
- ▶ **Family Income \$103,940**



- ▶ **Persons below poverty.... 33**
- ▶ **Families below poverty.... 4**

Intergovernmental Partners

- ▶ **City of Madison**
 - ▶ **City of Middleton**
 - ▶ **Town of Verona**
 - ▶ **Town of Cross Plains**
 - ▶ **Town of Springfield**
 - ▶ **Town of Middleton**
 - ▶ **Dane County**
- Mid-XP School Dist**
Verona School Dist
Madison School Dist
- Planning Partners**

Services Now Provided

- ▶ Brush pickup
- ▶ Snowplowing
- ▶ Park Maintenance
- ▶ Park Development
- ▶ Trash & Recycling
- ▶ Roadside Weed Control
- ▶ Road Maintenance
- ▶ Website & Newsletter Communications
- ▶ Full Week Office Hours
- ▶ Fire and EMS Services

**ANY MORE NEEDED
AND WILLING TO
BE TAXED FOR ????**

