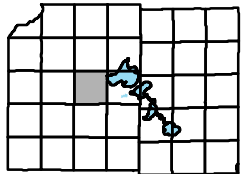
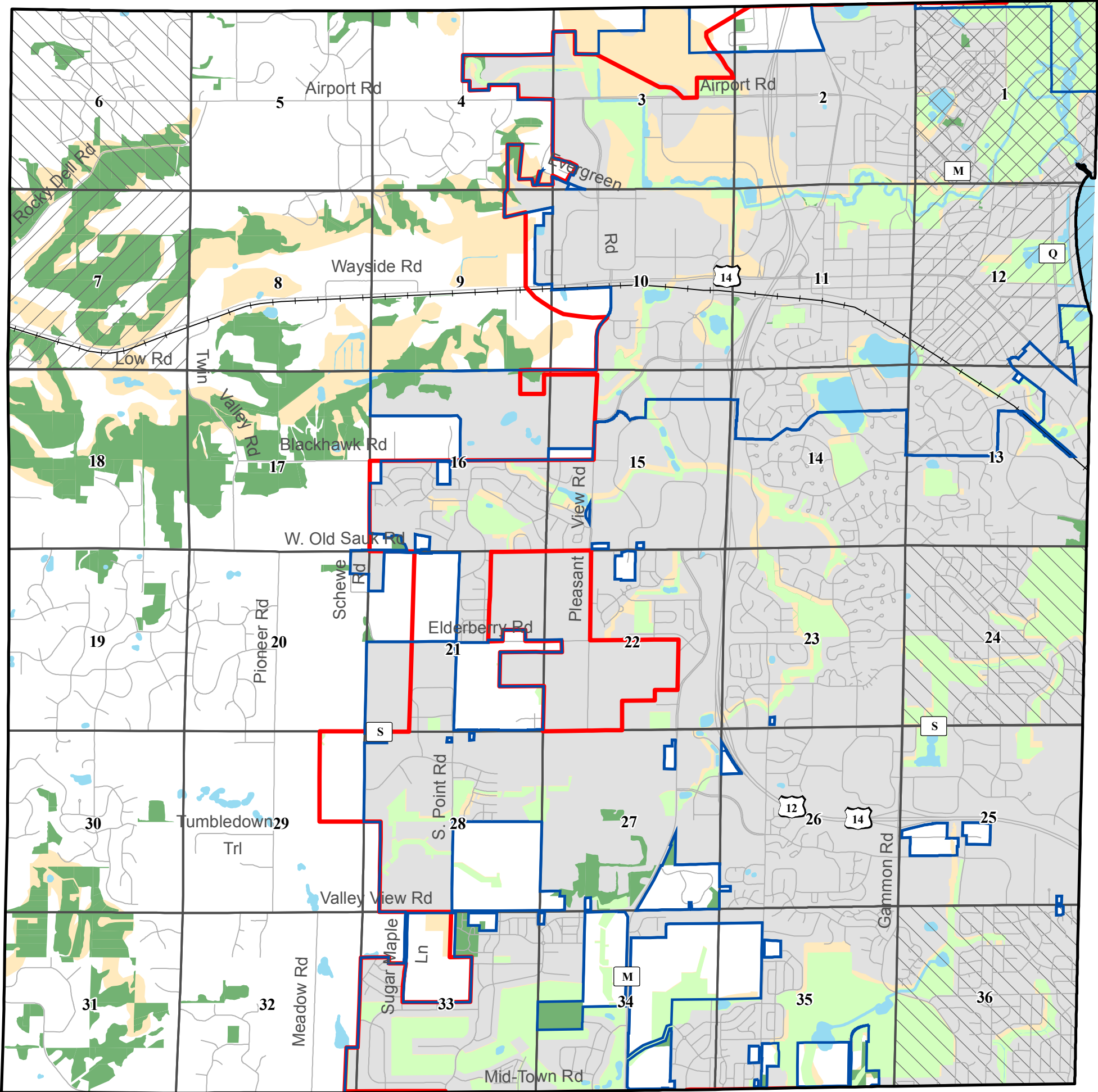


# Town of Middleton



Map 7: Environmental Features

**DRAFT**



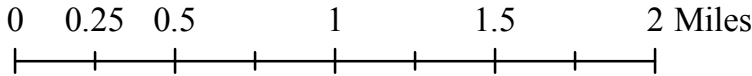
- Environmental Corridor
- Dedicated Open Space
- Woodland

**Rare Species**

- Aquatic
- Terrestrial
- Both

- City or Village Boundary
- Central Urban Service Area
- Section Boundary

May, 2007



Source Info:  
 Central Urban Service Area: 05/07, (DCPD)  
 City or Village Boundary: 01/07, (DCPD)  
 Environmental Corridor: 05/07, (DCCAPD)  
 Open Space: 2000, (DCRPC)  
 Rare Species: 2004, (WIDNR)  
 Woodland: 2005, (DCCAPD)

This map was prepared through the Dane County Department of Planning and Development in conjunction with the Dane County Land & Water Resources Department, Dane County Land Information Office and the Dane County Community Analysis & Planning Division.