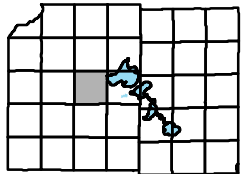
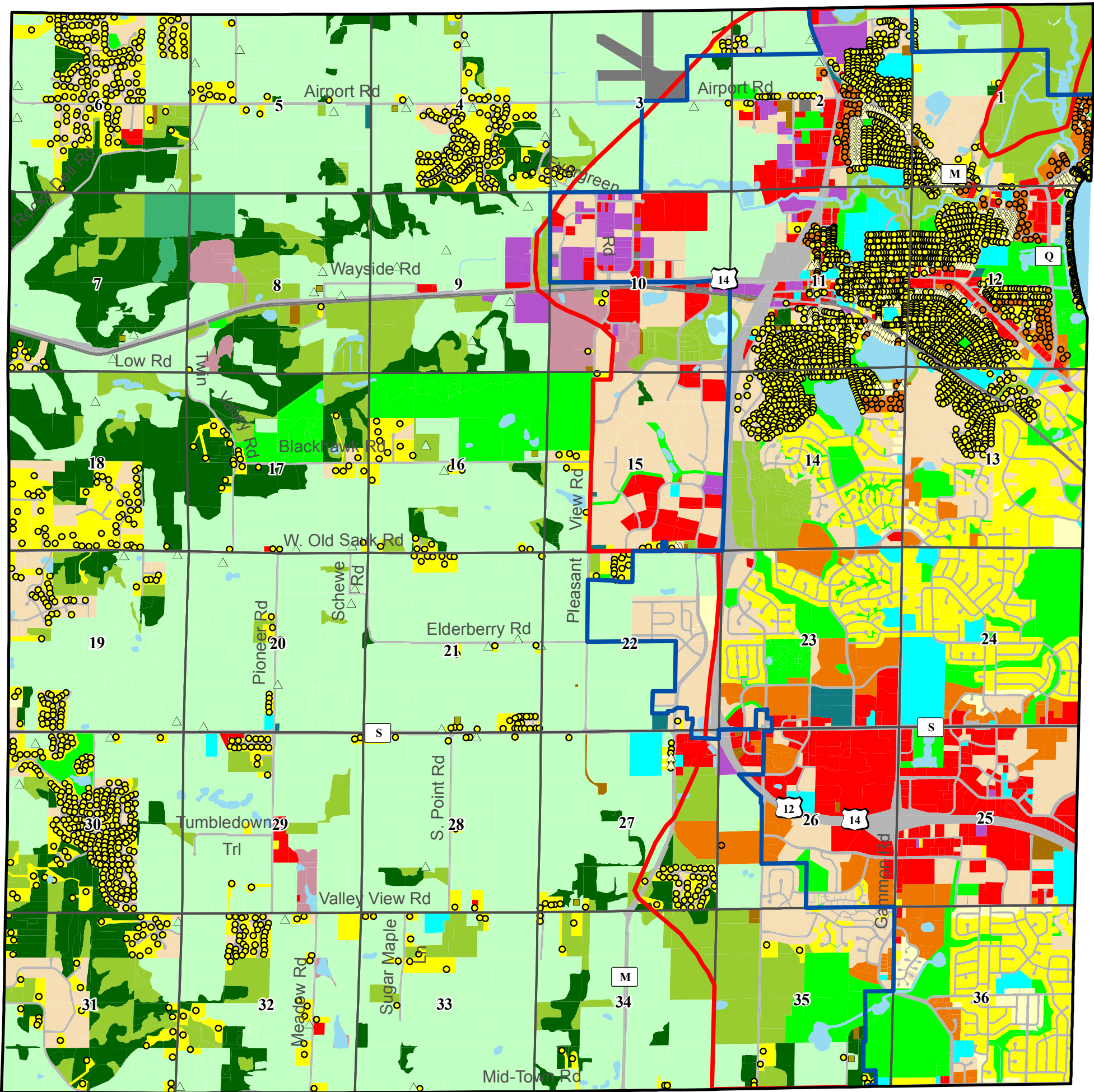


Town of Middleton



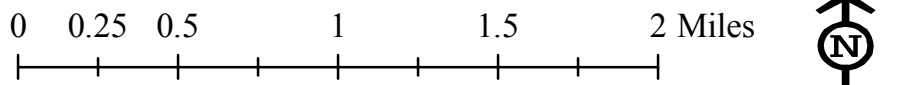
Map 9: 1981 Land Use

DRAFT



- Municipal Boundary (1981)
- Central Urban Service Area (1981)
- Section Boundary
- Single Family
- ▲ Two Family
- Multi-Family
- ▲ Farm Dwelling
- Agricultural Accessory Building
- Agriculture
- Cemetery
- Commercial Forest
- Commercial Sales or Services
- Communications or Utilities
- Extractive
- Industrial
- Institutional or Governmental
- Multi-Family
- Open Land
- Outdoor Recreation
- Right of Way
- Single Family
- Transportation
- Two Family
- Under Construction
- Vacant
- Water
- Woodland

The municipal boundary shown is a rough approximation of the western boundary of the City of Madison and City of Middleton. September, 2007



Source Info:
 1981 City Boundary: 2007, (DCPD)
 Land Use: 2007, (DCCAPD)
 1981 Service Areas: 2007, (DCCAPD)

This map was prepared through the Dane County Department of Planning and Development in conjunction with the Dane County Land & Water Resources Department, Dane County Land Information Office and the Dane County Community Analysis & Planning Division.